



## SVM VAP®

Vessel Auto Plan

### SIZE MATTER

Capable of planning vessel with capacity up to 14,000 TEUs

### CONSTRAINT SOLVER

Using algorithm to solve complex vessel and cargo constraints

### VISUAL CLARITY

Easily identify different equipment types, DG, OOG and REEFER cargo by user definable colour theme

### UNIFY PLANNING

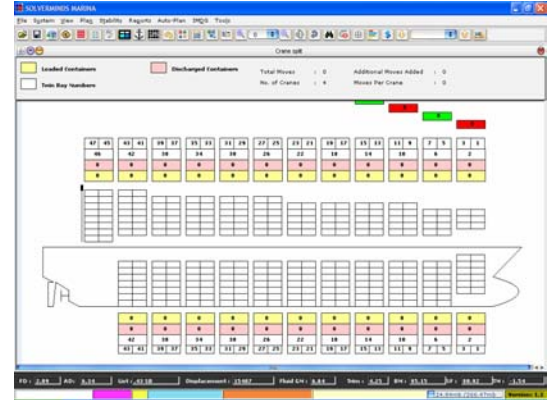
Reduce learning curve for new trainees

# High Performance Vessel Stowage Plan

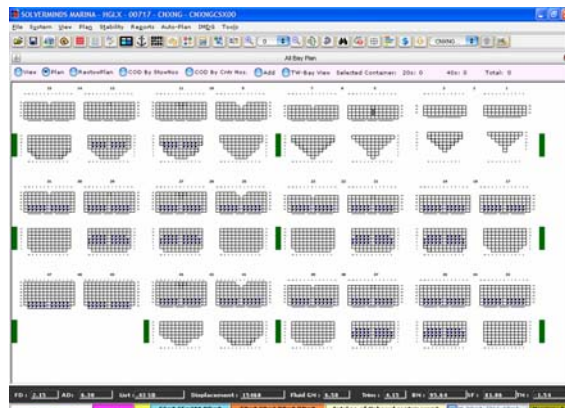
Increasing vessel size due to technological advancement has created new challenges to vessel planner. As vessel carrying capacity increased, the quantity of containers to be planned also increased so does the time taken to plan the each vessel.

At present the job of vessel planning is being carried out using Manual Planning Systems. These systems (Manual Planning) can be effectively used only if comprehensive training for considerable period of time is provided to end users (Vessel Planners and others). Despite all the training, errors in planning can still occur due to various reasons as a number of constraints have to be considered.

The auto plan feature of SVM VAP® Vessel Auto Plan System is designed to helping vessel planner increase productivity in vessel planning whilst complexity of calculating vessel and cargo constraints are considered relieving tedious task of manual work.



- User Define Bay Allocation**  
 Gives user the control in critical POL's preference to such cargo allocation
- Auto plan container forecast**  
 Enables the Auto Plan to designate automatically appropriate slots for each POD keeping crane split gap in preview
- Stack Weight/Height**  
 Customize stack weight & height per bay / row as required for efficient plan
- IMDG Segregation**  
 DG segregation basis UN No, DOC (Document of Compliance) and any 'House rules' as defined by the company
- Optimize space utilization**  
 Optimize vessel capacity utilization while ensuring minimal restow cost





## Features and Benefits

### OTHER FEATURES

- **Stability & Stress**

View actual stability and stress related information to assess the seaworthiness of the vessel in any given condition

- **Manual or Auto**

Option to choose either manual or auto planning

- **EDI Support**

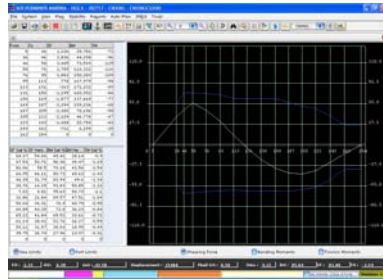
BAPLIE, MOVEIN & TANSTA

- **Integration**

Integrate with **SVM** ERP ©

- **Visibility**

Grant visibility to agency network for improved operation planning and efficiency



- **Future ports minimum crane Bay-Gap**  
Give preference to load the entire bay across with the same POD cargo
- **Container recap**  
View the 'onboard', 'forecast', 'confirmed', 'restow' status of containers with various filters such as POD, POL, hazardous, empties, OOG basis etc
- **Auto ballast solver**  
Gain more control over which ballast tanks to be filled and by what percentage volume

- Gain productivity in planning, while ensuring optimize capacity utilization
- Reduce tedious manual planning task, while take control over and minimize restow cost
- Unify planning task with single platform with standard user interface, processes and enterprise reporting.
- Achieve a lower total cost of ownership with a single source of support, service, and maintenance.
- Obtain consulting and advice on business processes best practices from industry experts.

## System Requirements

- **Minimum Recommended PC Client**  
Intel Pentium Core 2 Duo Processor  
1 GB RAM / 20GB hard disk / 1024 x 768 Resolutions  
Windows XP / Vista  
Acrobat Reader for reports



## Contact us

### India Office

Solverminds Solutions & Technologies Pvt Ltd  
97, Block A1, First Floor  
SIDCO Industrial Estate  
Villivakkam, Chennai, 600 049 India  
+91 44 4557 6004 ph  
+91 44 2617 2989 fax  
www.solverminds.com

### Malaysia Office

SVM Solutions & Technologies Sdn Bhd  
No 27C, Jalan Petaling Utama 12  
7 ½ Miles Old Klang Road  
46000 Petaling Jaya, Selangor  
Malaysia  
+60 3 5635 1294 ph  
+60 3 5631 4266 fax  
www.solverminds.com